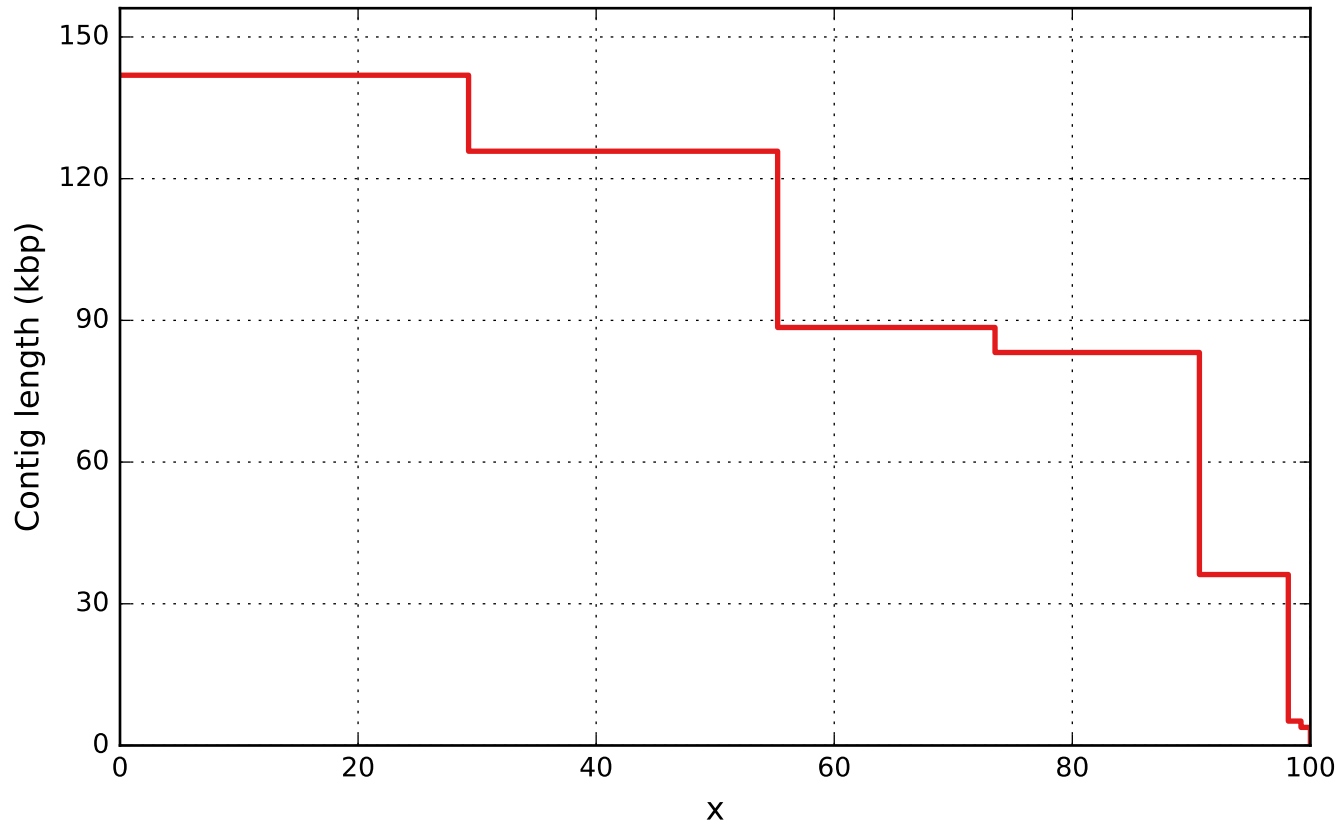


Report

	spades.fasta.txt
# contigs (≥ 0 bp)	13
# contigs (≥ 1000 bp)	7
# contigs (≥ 5000 bp)	6
# contigs (≥ 10000 bp)	5
# contigs (≥ 25000 bp)	5
# contigs (≥ 50000 bp)	4
Total length (≥ 0 bp)	486016
Total length (≥ 1000 bp)	484585
Total length (≥ 5000 bp)	480756
Total length (≥ 10000 bp)	475592
Total length (≥ 25000 bp)	475592
Total length (≥ 50000 bp)	439403
# contigs	7
Largest contig	141900
Total length	484585
GC (%)	51.40
N50	125811
N75	83198
L50	2
L75	4
# N's per 100 kbp	0.00

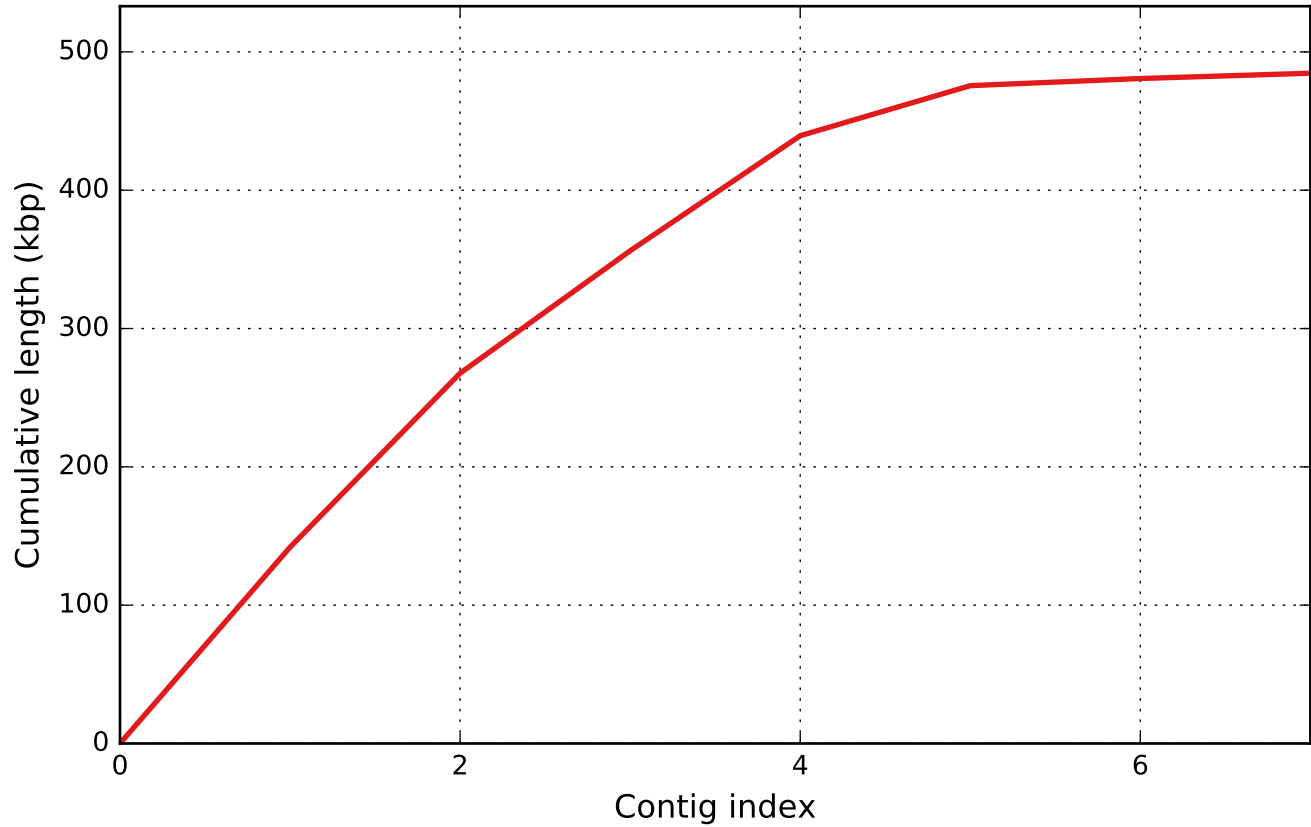
All statistics are based on contigs of size ≥ 500 bp, unless otherwise noted (e.g., "# contigs (≥ 0 bp)" and "Total length (≥ 0 bp)" include all contigs).

Nx



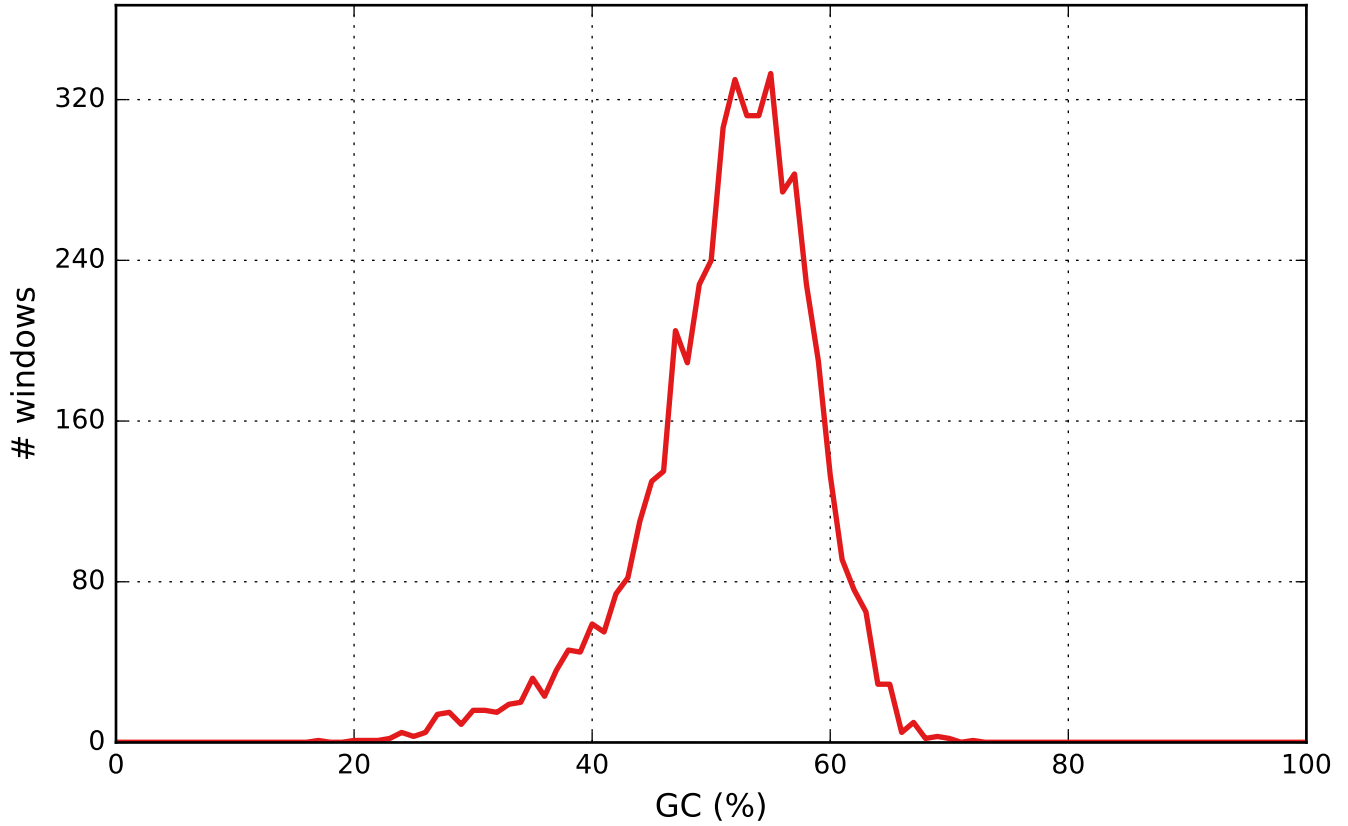
— spades.fasta.txt

Cumulative length



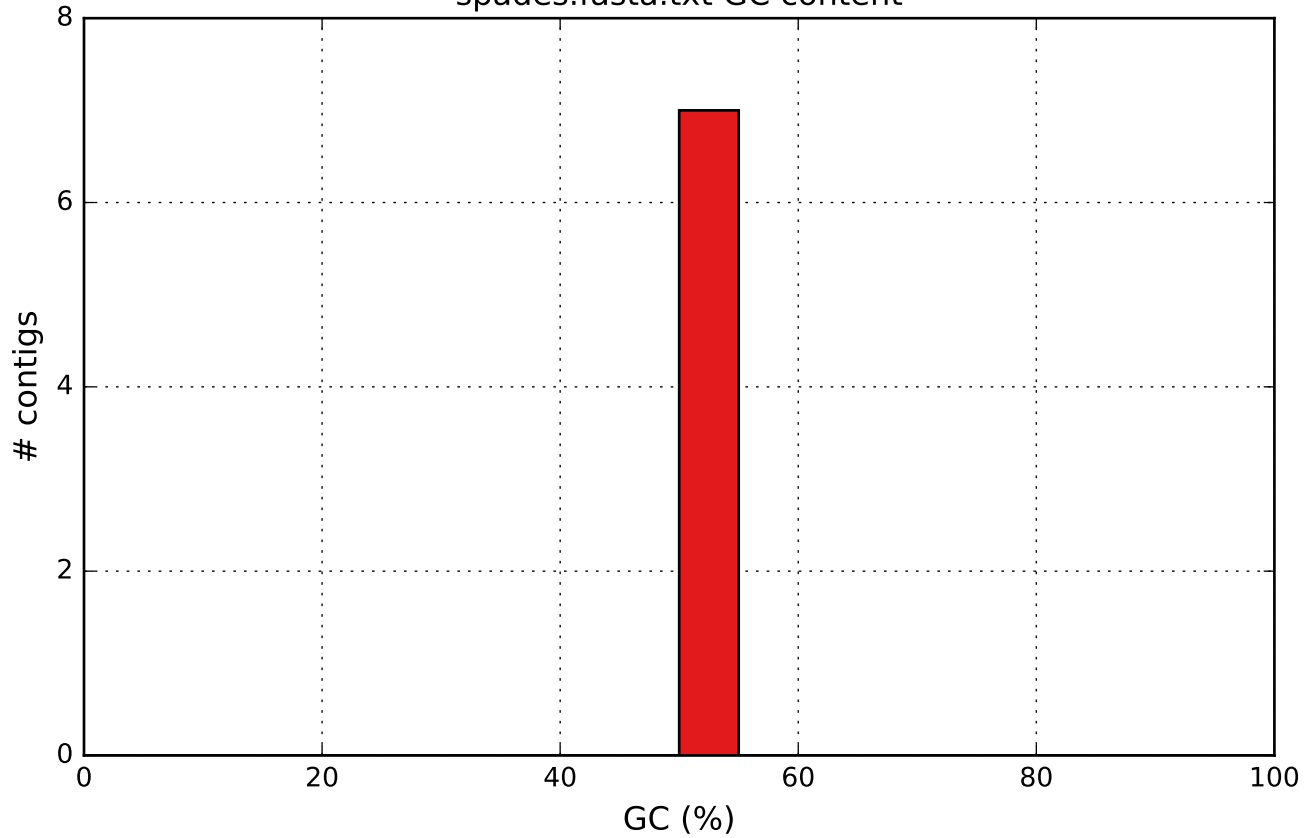
— spades.fasta.txt

GC content



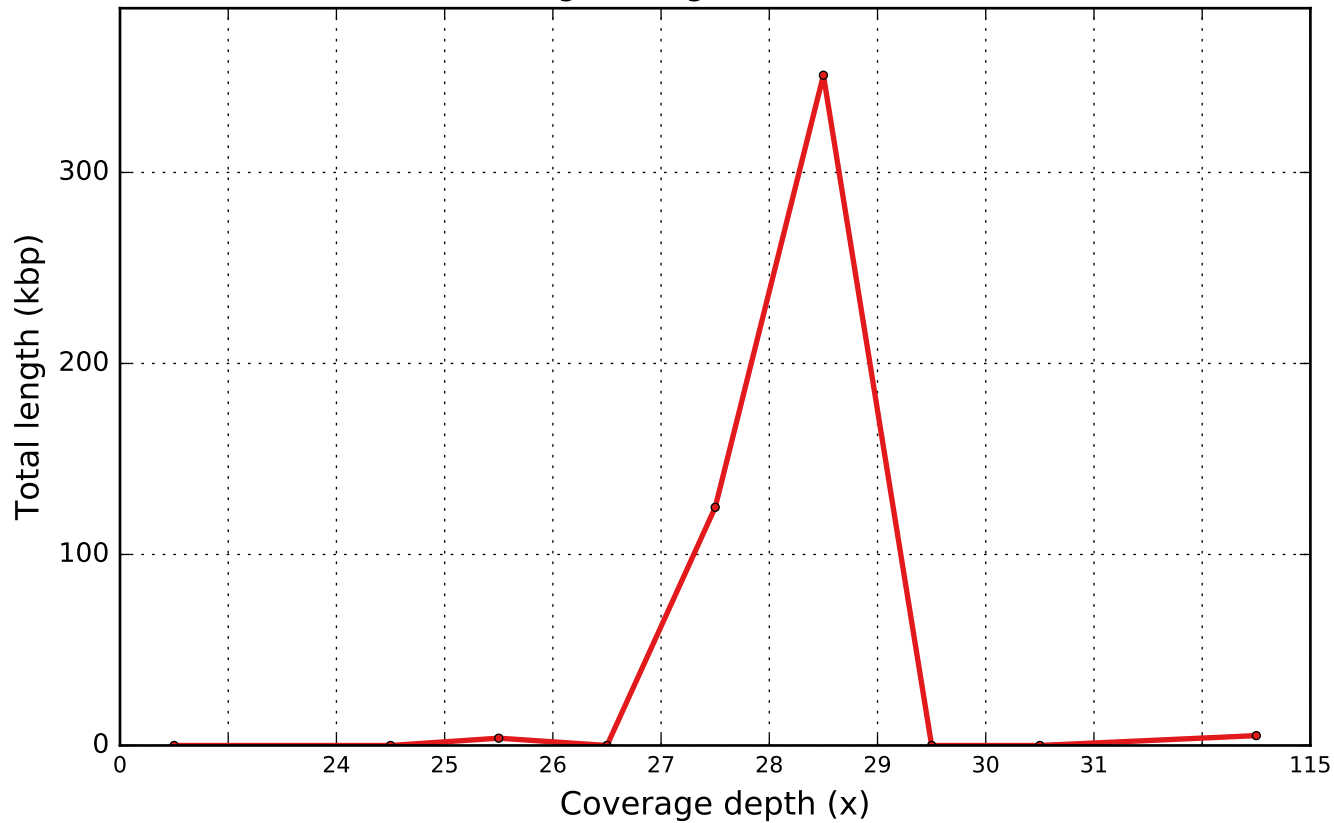
— spades.fasta.txt

spades.fasta.txt GC content



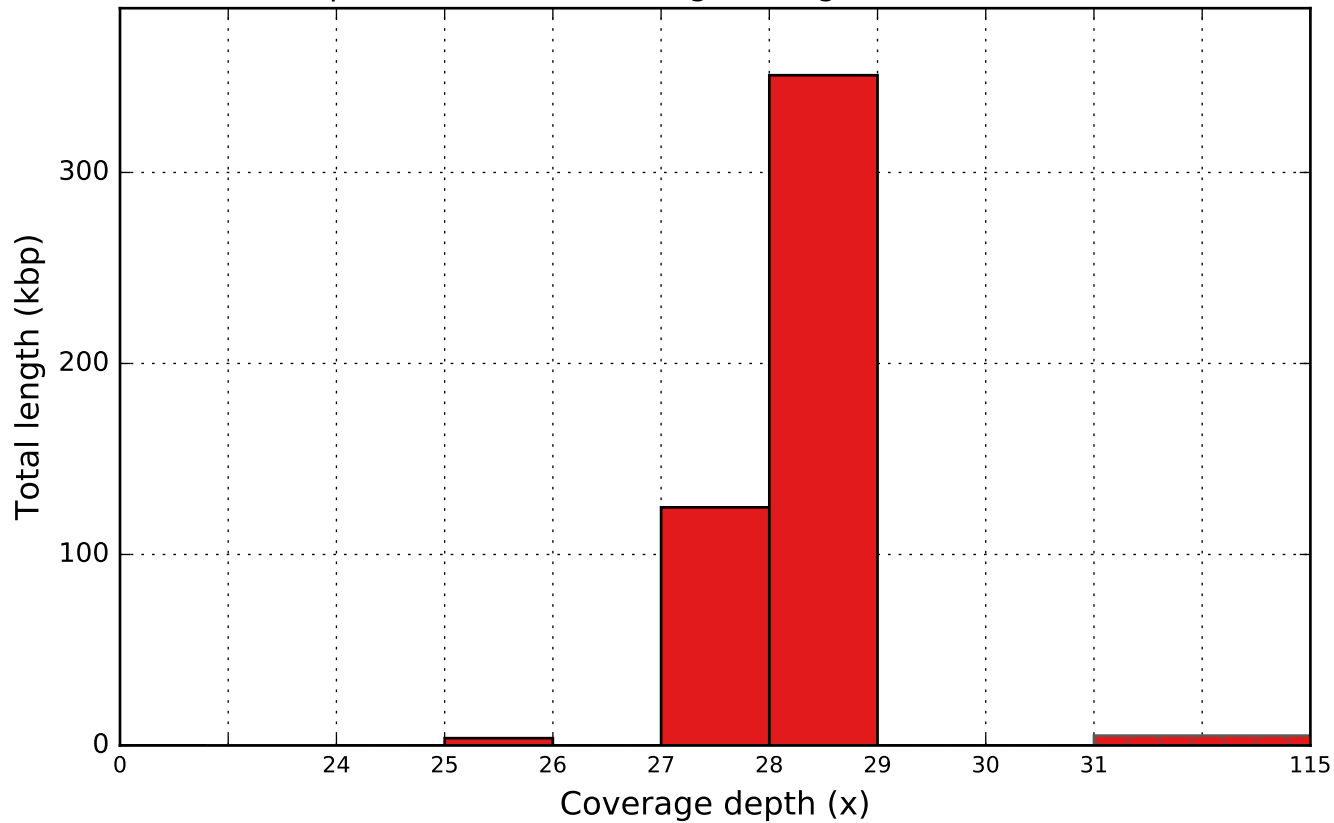
spades.fasta.txt

Coverage histogram (bin size: 1x)



spades.fasta.txt

spades.fasta.txt coverage histogram (bin size: 1x)



spades.fasta.txt